



>Welcome

We're glad you're here!

Building Task Force Update

FIRST PRESBYTERIAN CHURCH

WORSHIP SERVICE 10:00

REV. ROBERT PATTON

WEDNESDAY 10:00 AM

CASA DE RESTAURACION 1PM

PASTOR LUIS LOPEZ

TPC Mission Statement

*“The Mission of the Templeton Presbyterian Church is to cultivate a community of people who know they **Belong** to Jesus Christ. To help them **Believe** in who He is, and **Become** who He is calling them to be!”*

Task Force Members

- George Marrett-chairman
- Greg Honegger-secretary
- Richann Robinson-Christian Education and Discipleship elder
- Neil Roberts-Stewardship and Administration elder
- Mark Iversen-Facilities elder
- Pastor Roger-ex officio

Our work since 11/5/23

- Received initial concepts and reports from architects Greg Barker, and Julie Clayton.
 - Discussed the feasibility and practicality of these concepts.
 - Narrowed our choice to a couple of concepts we felt would best fit our short and long term needs.
 - Came to a stopping point with Greg Barker and Julie Clayton. Expressed gratitude for their leadership in the needs assessment and initial concept designs.
 - Began working on some small improvements ourselves such as the space between the sanctuary and fellowship hall, storage, and playground areas.
 - Retained the services of architect Joe Elkins, designer of our 1994 building project, to refine our initial concept and help develop a three-phase strategic plan.
 - Prioritized our phase-one build of the strategic plan and secured a detailed estimate of phase-one costs.
 - Met with the Church Doctors to share our vision and plan for facility needs.
 - Reported to the session in 11/24 our findings and received approval to proceed with the next steps.
-

Why build???

- Two key words "community" and "Christ."
 - We see Templeton Presbyterian Church as being the premier community church in Templeton.
 - Many who find their way to us love the small town big heart ministry of our church to this community. We are and want to remain a committed Christian family church for all ages and all walks of life.
 - We want to continue to engage our community and offer the best space and environment to meet ministry needs and help people grow in their relationship with God through Christ.
-

Priorities for Phase One

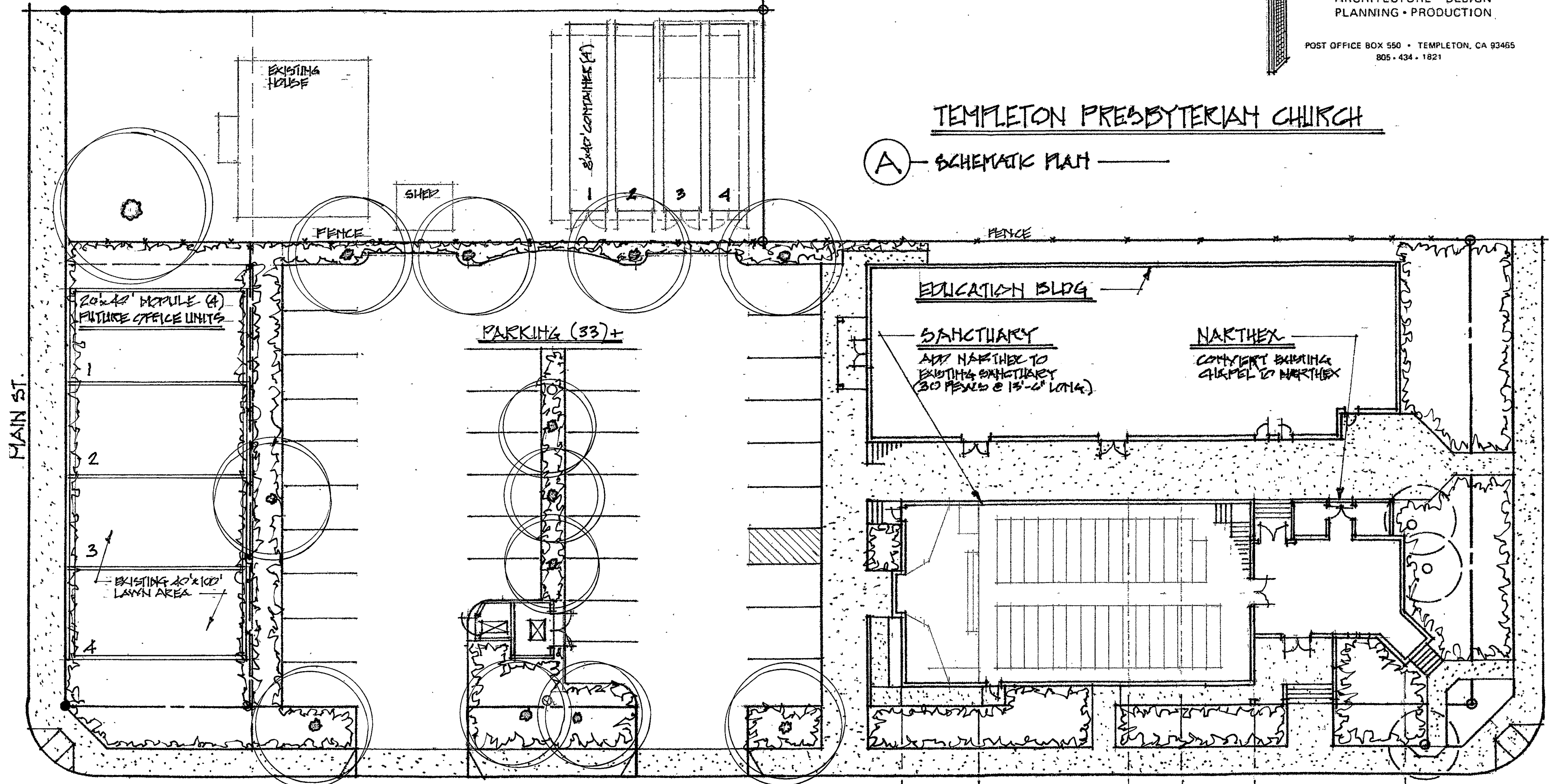
- Expand our worship space in the sanctuary to better accommodate a growing church and provide a space that is welcoming to visitors and guests.
 - Make better use of our historic and beautiful chapel. This structure is a treasure to both the church and community. We want this space to be a place where people gather, connect, and experience the legacy of the longest standing faith community in Templeton.
 - Create a better gathering space for information, ingress, egress, and restroom facilities.
 - Have a flexible worship space that can accommodate different kinds of worship services, programs and performances.
-

Priorities for Phase One -Continued

- Provide a solution that makes the best use of our current campus footprint and existing facilities.
 - Minimize disruption to the regular church programming.
 - Be cost-effective and strategic in regard to our designated funds, and future building plans in phases two and three.
-

TEMPLETON PRESBYTERIAN CHURCH

A — SCHEMATIC PLAN —



MAIN ST.

6TH ST.

SCALE 1" = 20'

5/13/2024
7/25/2024 REV.

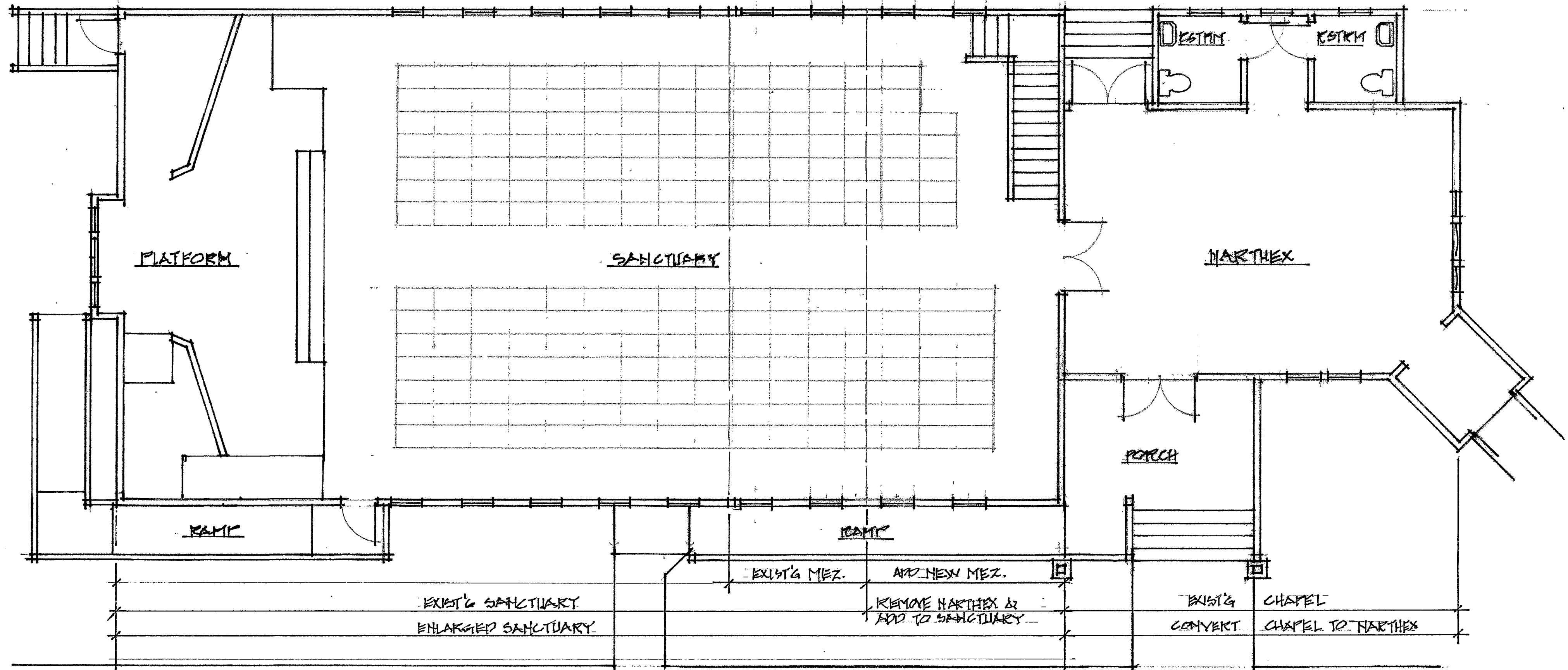
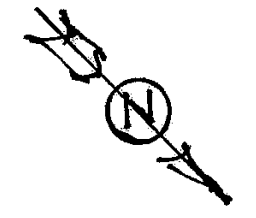
PLATFORM, SANCTUARY (60'x40') (MEZ) (NARTHEX) (CHAPEL)
NARTHEX (30'x32')



TEMPLETON PRESBYTERIAN CHURCH

SCALE 1/8" = 1' 6/8/2002A 7/8/2002A REV.

215 SEATS USING 22" x 36" MATHE
 161 " " 22" x 48" "
 124 " " 22" x 60" "



PLATFORM

SANCTUARY

NARTHEX

RAMP

RAMP

PORCH

EXIST'G MEZ.

ADD NEW MEZ.

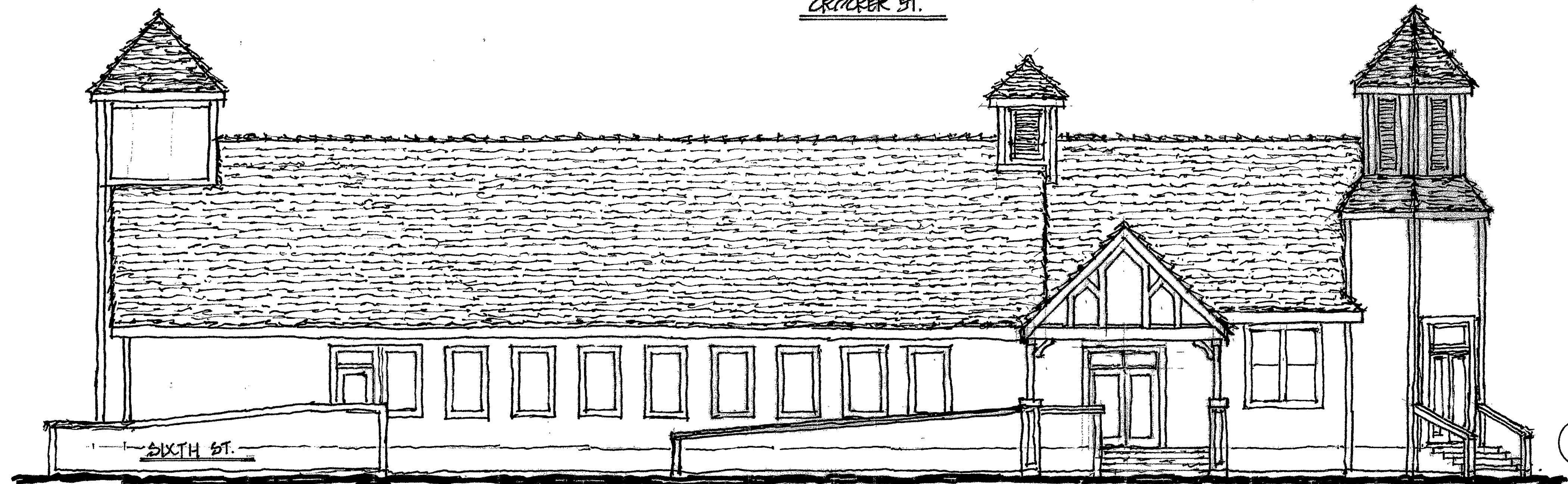
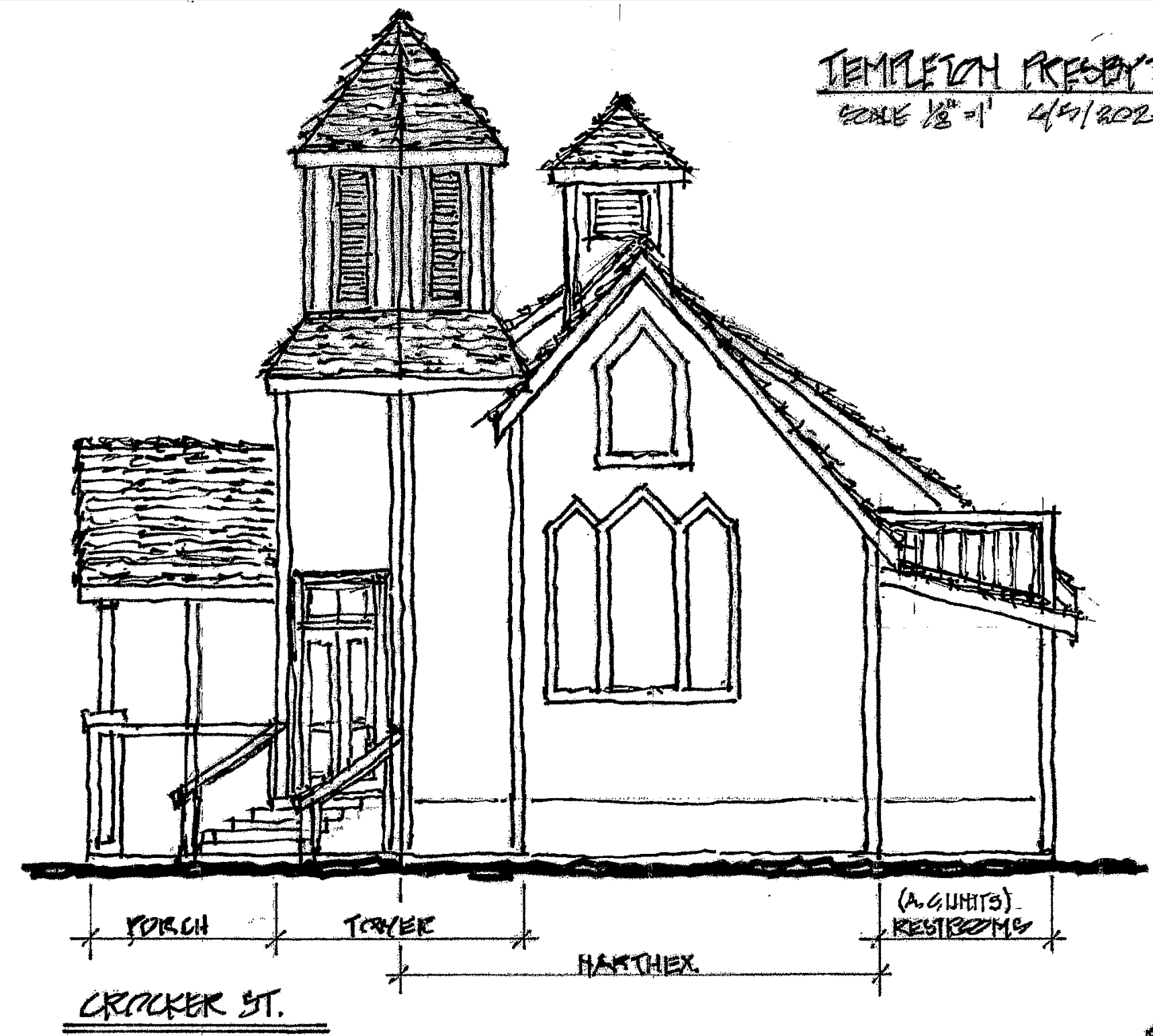
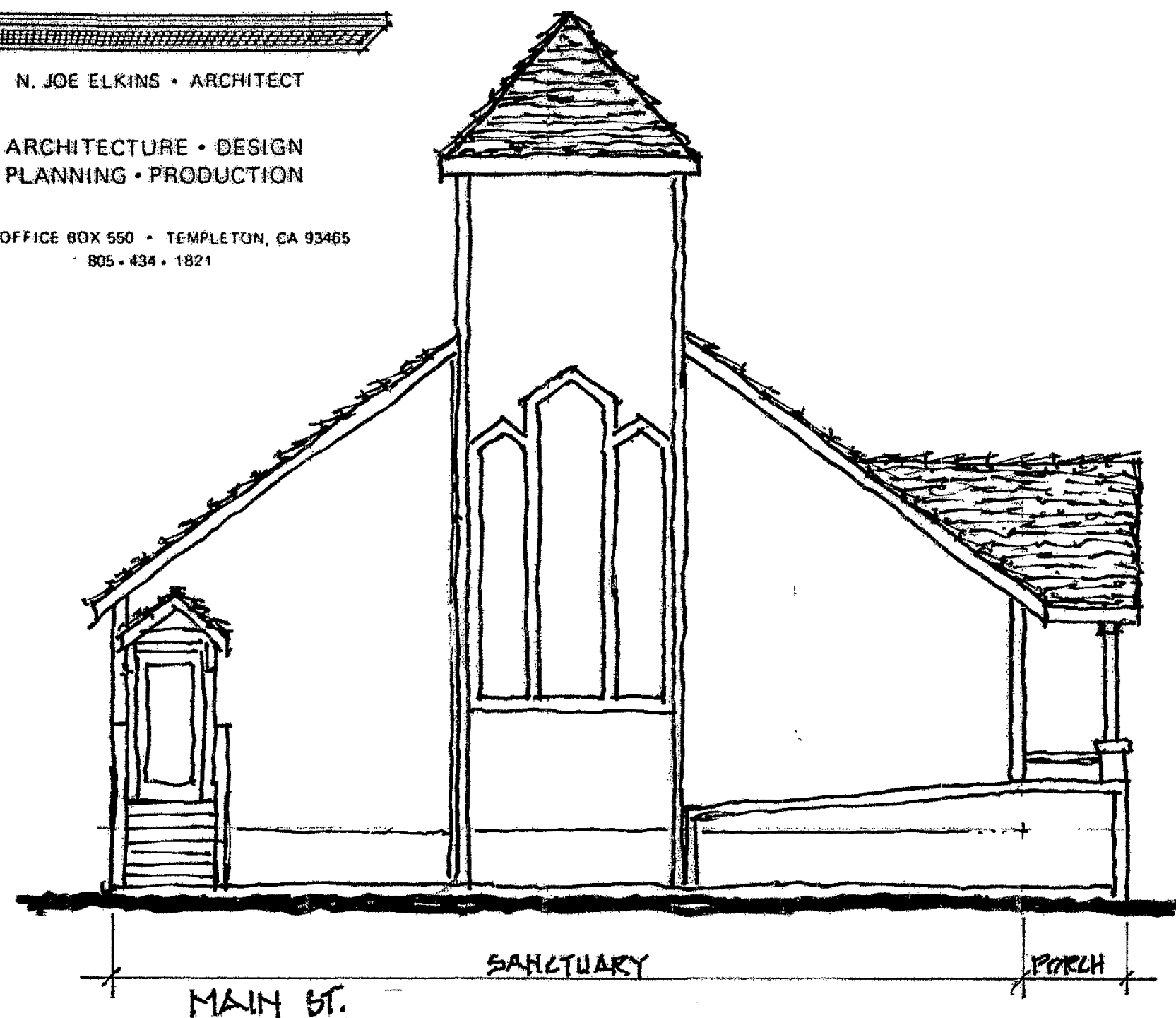
EXIST'G SANCTUARY
 ENLARGED SANCTUARY

REMOVE NARTHEX &
 ADD TO SANCTUARY

EXIST'G CHAPEL
 CONVERT CHAPEL TO NARTHEX

N. JOE ELKINS • ARCHITECT
ARCHITECTURE • DESIGN
PLANNING • PRODUCTION
POST OFFICE BOX 550 • TEMPLETON, CA 93465
805 • 434 • 1821

TEMPLETON PRESBYTERIAN CHURCH
SCALE 1/8" = 1' 4/4/2024 7/8/2024 REV.

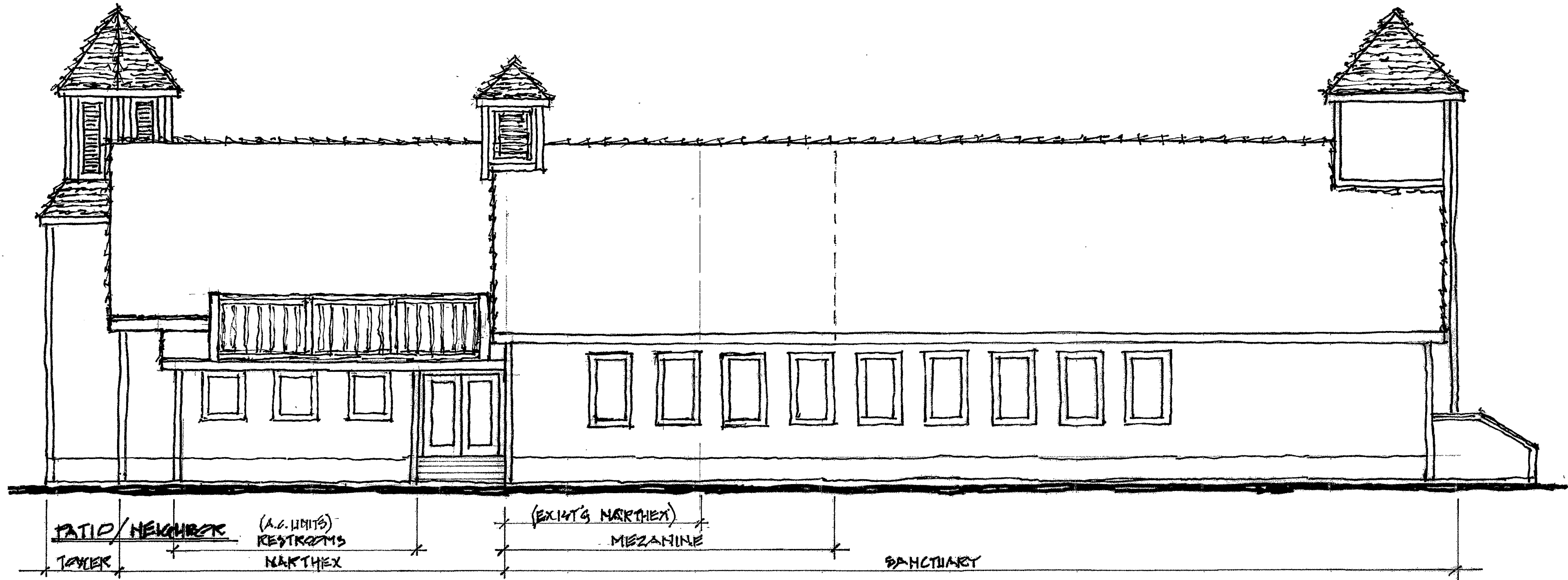


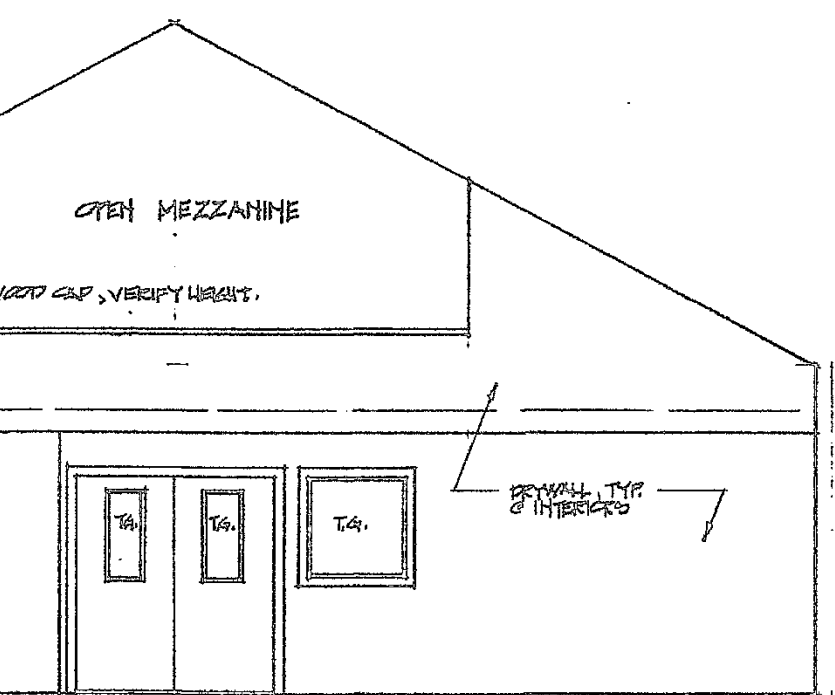
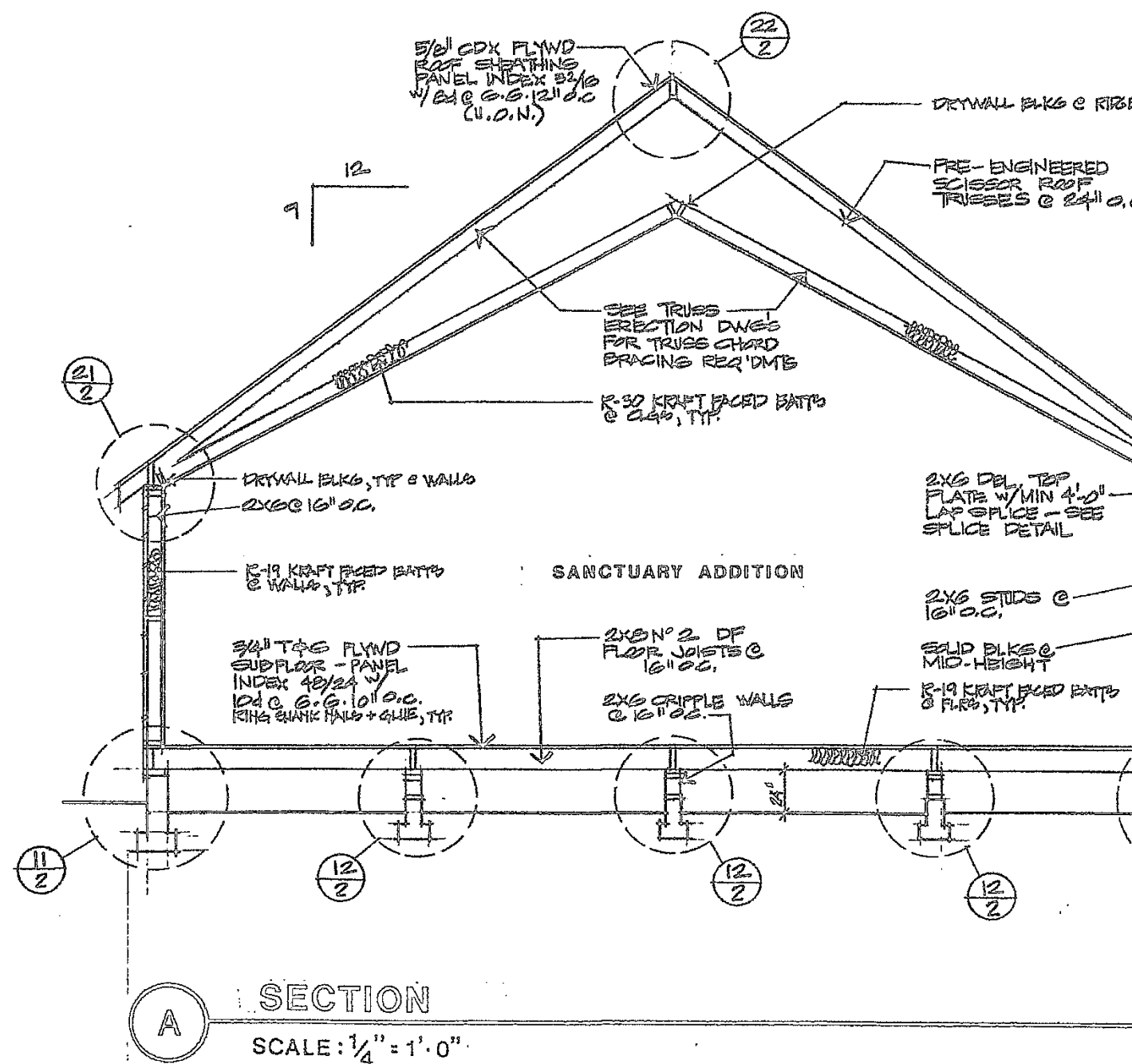
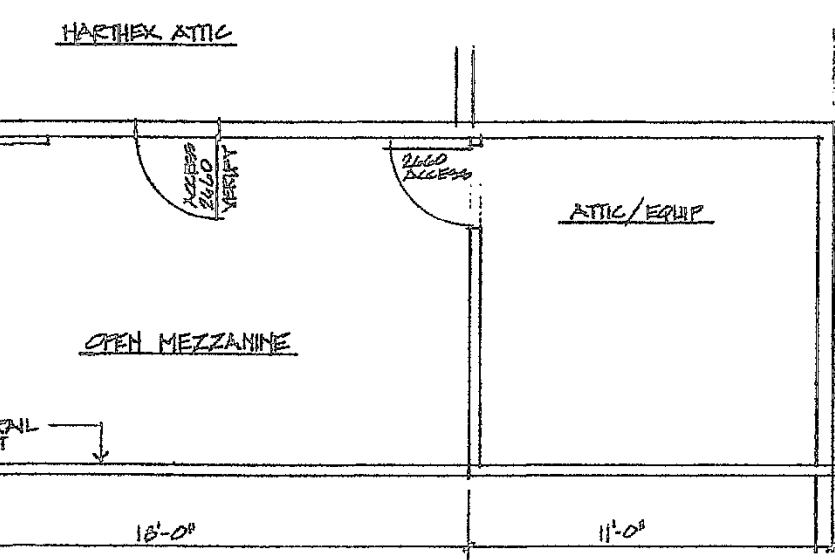
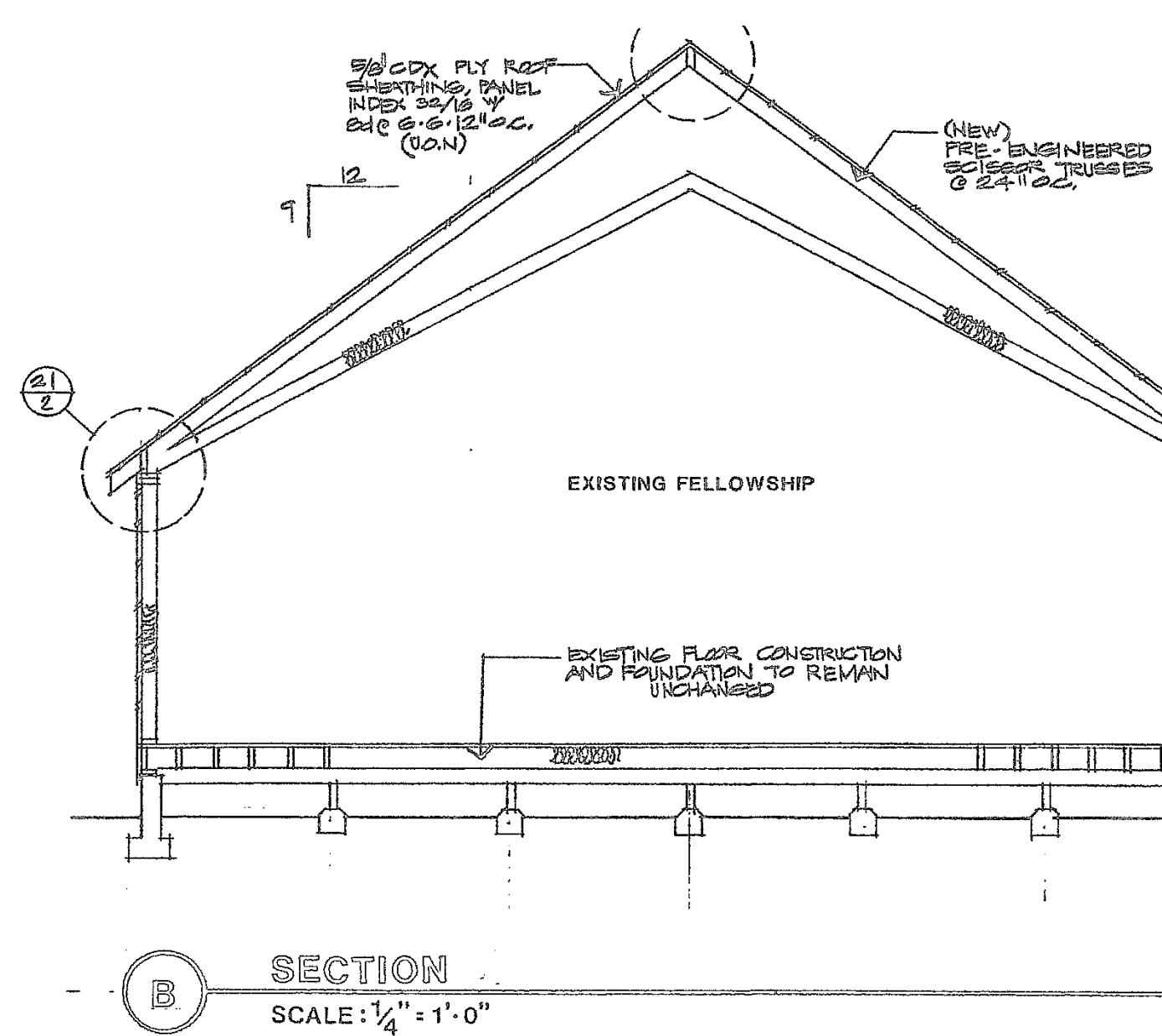
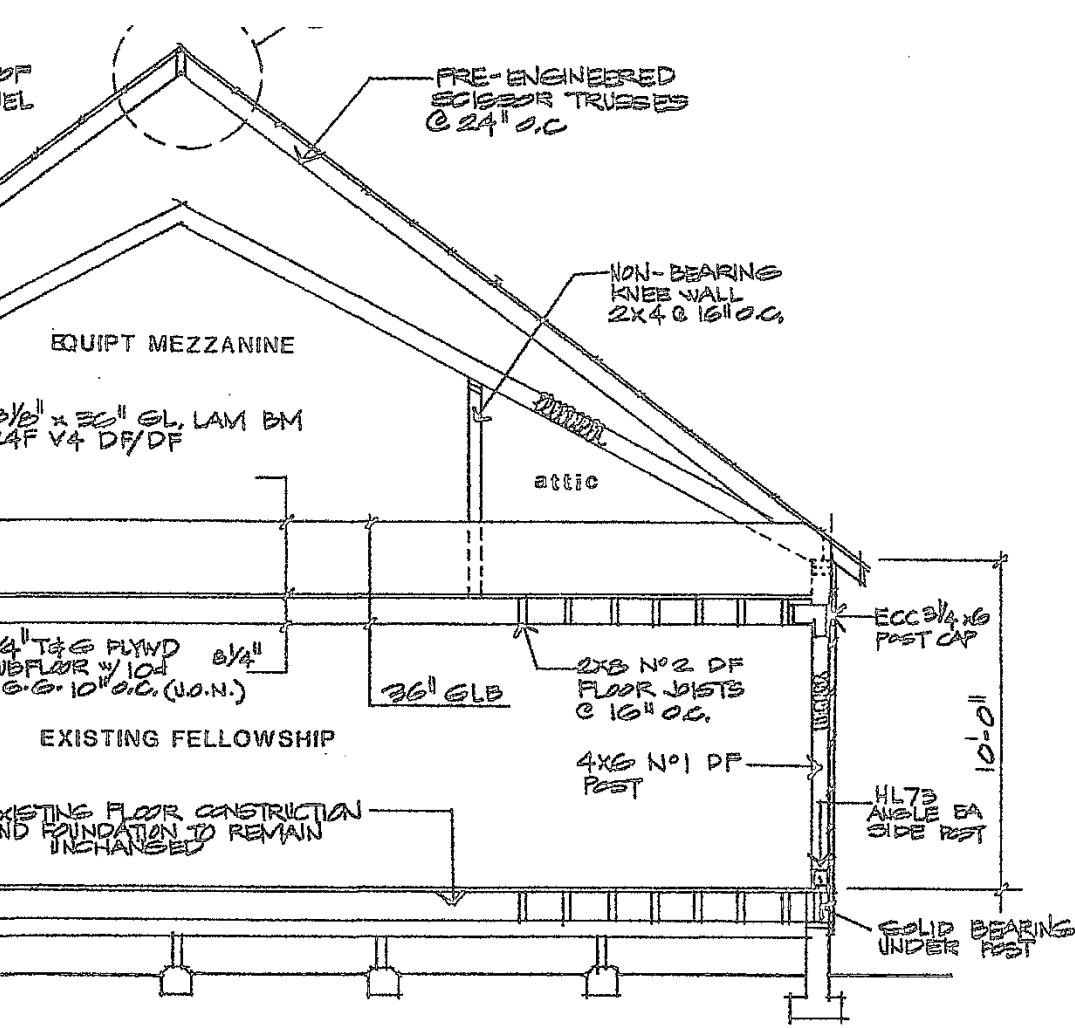
N. JOE ELKINS • ARCHITECT

ARCHITECTURE • DESIGN
PLANNING • PRODUCTION

POST OFFICE BOX 550 • TEMPLETON, CA 93465
805 • 434 • 1821

TEMPLETON PRESBYTERIAN CHURCH
SCALE 1/8"=1' 6/15/2024 7/8/2024 REV.





What's next??

- Commence with the permitting and construction documents, moving toward a Spring 2025 start date.
- Continue to work on decluttering and removing un-used, un-needed items.
- Plan and decide how to coordinate ministry events, worship, and groups.

Thank You!

Please fill out a card and submit for questions
